

Bactrox Hypoxia Chamber

This latest addition to the Bactron line offers precise oxygen control ranging from 1% to 20% for microaerophilic bacteriology and hypoxic tissue or cell culture applications. With the additional capability of controlling carbon dioxide from 1% to 20%. The *Bactrox* permits oxygen and carbon dioxide control in increments of 1/10th of a percent. Unlike a tri-gas incubator, the Bactrox allows for microaerophilic bacteriology and hypoxic tissue or cell culture work to be performed in desired oxygen conditions throughout all culturing processes. The Bactrox is a complete workstation so bacteria and cells are more likely to grow faster and show less damage.

Advanced Atmospheric PID Controller

- Highly Accurate Zirconium Dioxide Oxygen Sensor
- CO₂ Control & Logging
- O₂ Control & Logging
- Ambient Air Pump
- Standard Tanks

Independent Incubator (5°C above ambient to 70°C)

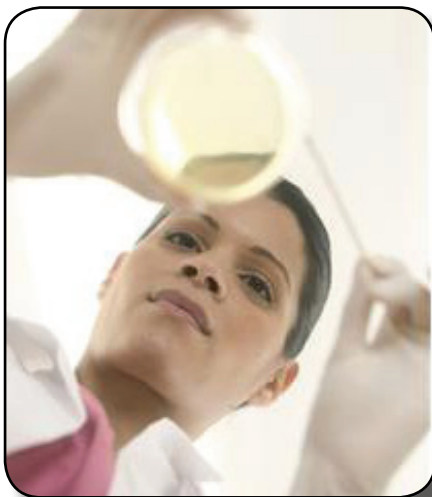
- Temperature Control & Logging
- 300 Plate Capacity

Extra Large Pass Box

- Vacuum-less Pass Box
- 60 Second Cycle Time
- 90 Plate Capacity

Vacuum Less Sleeve Entry

- Quick Access to Cultures
- No Vacuum System
- No Foot Pedals



The benefits of using the Hypoxia Chamber are as follows;

- Ultra Bright LED Examination Lights
- Stainless Steel Body Construction
- Independent Gas Controls
- RS232 Data Collection
- Condensation Control
- Immediate Access to Workspace via Sleeves
- Standard Microscope Adapter Accessories
- PC Calibration of Oxygen Sensor

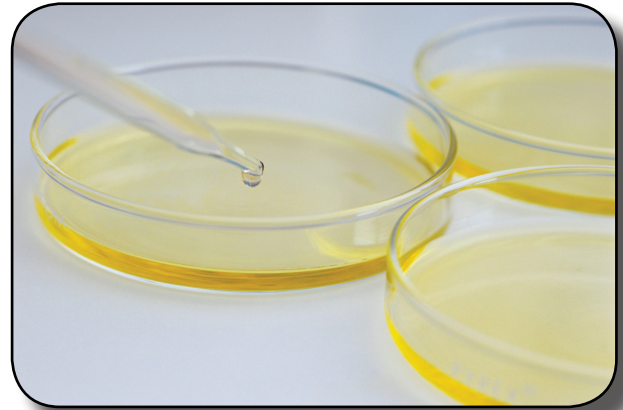
The Culmination of Over 40 Years of Industry Experience -

Combining our market experience and manufacturing excellence provides a solid foundation for our life science product offering. We are constantly evolving our products and manufacturing technology to keep the SHEL LAB name at the forefront of our industry.

Bactrox	
Exterior Dimensions (w x d x h)	49.0" x 32.0" x 33.5" 1245 x 813 x 851 mm
Interior Dimensions*	33" x 28.9" x 25.0" 838 x 734 x 635 mm
Volume	12.25 cu. ft. / 354 L
Air Lock (Access)	9" x 10.7" x 9" 229 x 272 x 229 cm
Volume	0.6 cu. ft. / 17.3 L
Incubator (w x d x h)	27.5" x 8.5" x 13.5" 699 x 216 x 343 mm
Volume	1.7 cu. ft. / 52.1 L
Electrical	
Voltz/Hertz	120-230/50-60
Watts	1100
Phase/amps	Single/9
Interior Outlets	2** 1amp. Max
Circuit breakers main	2
Incubator Performance	
Temp. range	Amb +8° to 60°C
Temp. uniformity	(+/-) .5° C
Weight	
Shipping Weight lb (kg)	480 (218)
With optional stand lb (kg)	710 (323)
Miscellaneous	
Petri plate racks included	7

*The height dimension of the interior is a subjective working height. This measurement reflects the dimension from the floor of the chamber to the top of the body without regard for shelves, interfering incubators or the airlock door.

**220 volt units are supplied with one interior outlet.
Specifications subject to change without notice.



Applications:

- Hypoxic Microbiology Assays
- Clinical Microbiology
- Hypoxic Bacteriology
- Hypoxic Tissue Culture Research
- Microaerophilic/Hypoxic
- Quality Control
- Packaging
- R&D
- Industrial Research

Optional Accessories

Cuffs 3600502 (L)/3600501 (M)/3600500
9990738L (Sml) Sleeve Assembly
9490512 BACTROX Start-up Kit

BACSTAND-SM22L Bactrox Chamber Stand

Additional accessories are available at www.sheldonmfg.com

0740547 2/18